

MARYLAND DEPARTMENT OF HEALTH

Developmental Disabilities Administration

Accessing Services

June 12, 2018

Presentation for the Howard County Autism Society



Agenda

1. DDA Overview
2. Eligibility
3. Employment First
4. Charting the LifeCourse Framework and Integrated Star
5. DDA Medicaid Waiver Programs
 - ✓ Service Models
 - ✓ Waiver Services

Developmental Disabilities Administration

- We believe that ALL people have the right to live, love, work, learn, play and pursue their life aspirations in the community
- We partner with people with developmental disabilities and families to provide support and resources to live fulfilling lives
- We provide a coordinated service delivery system to enable children and adults with intellectual and developmental disabilities and families to work toward self-determination, interdependence, productivity, integration, and inclusion in all facets of community life across their lifespans
- We are one of many resources, services and supports available to assist individuals and families as they build their lives toward their vision of the of the “Good Life”

DDA's Essential Focus Areas for Community Living

- Self-Determination
- Self-Advocacy
- Employment
- Supporting Families
- Independent Housing

DDA's Supports

➤ Children

➤ Adults

➤ Families



Eligibility vs. Entitlement

- In Maryland, a student with a disability who is receiving special education services is entitled to a free appropriate public education through the school year in which the student turns 21 years of age (Individuals with Disabilities Education Act (IDEA), 2004) or has met the requirements for a Maryland High School Diploma or a Maryland High School Certificate of Program Completion
- Once a student exits school he or she must meet the eligibility criteria and funding availability to attend post-secondary education and/or receive services from adult service agencies
- The DDA services are provided based upon “eligibility” for services and the availability of funding



DDA Application Process

- **Application-** Includes information about age, disability or disabilities, Medical Assistance, etc.
- **Supporting Documentation-** Relevant professional assessments. Important to have the most recent psychological assessment with adaptive skills testing
- **Recommendation Process-** collect more information as needed, interview, recommendation for eligibility and priority category
- **Review Process-** Reviewed though the local regional office

Application available online

<https://dda.health.maryland.gov/Pages/eligibility.aspx>

DDA Eligibility Categories

- **“Developmentally Disabled” (DD)**
- **“Supports Only” (SO); or**
- **Not Eligible**



“Developmentally Disabled”

Eligibility:

- Is attributable to a physical or mental impairment, other than the sole diagnosis of mental illness, or to a combination of mental and physical impairments
- Is manifested before the individual becomes 22 years old
- Is likely to continue indefinitely
- Results in an inability to live independently without external support or continuing or regular assistance
- Reflects the need for a combination and sequence of special, interdisciplinary, or generic care, treatment, or other services that are individually planned and coordinated for the individual

“Developmentally Disabled”

- Individuals with a developmental disability *diagnosis* are not necessarily eligible for services under the DDA
- Eligibility is not based on category or name of disability
- The need to meet all specific criteria established in law and therefore the importance of functional assessments

“Supports Only”

Severe chronic disability that is:

- Attributable to a physical or mental impairment other than a sole diagnosis of mental illness, or to a combination of mental and physical impairment

- Likely to continue indefinitely

Priority Category

- **Crisis Resolution:** The person is in crisis or emergency situation (for example - abuse, neglect, homeless)
- **Crisis Prevention:** Person is or will be in a health or safety crisis within the next year
- **Current Request:** Person needs/wants services; health and safety are not the immediate issues

Determinations and Notice

- Person is eligible for full “DD” services funding or Supports Only:
 - ✓ Approval letter with priority status
 - ✓ Placement on DDA Waiting List

OR

- Person is not eligible for either full “DD” service funding or for Supports Only:
 - ✓ Denial letter with appeal rights

Funding Priorities

- DDA can be allocated dedicated funding for priorities including:
 - ✓ Emergencies
 - ✓ Court involved
 - ✓ People leaving an institution
 - ✓ Youth exiting the foster care system
 - ✓ People on the DDA Waiting List
 - ✓ Transitioning Youth

Transitioning Youth

- Transitioning Youth comprise a special category of eligibility and priority for services
- Through the Governor's Transitioning Youth Initiative the DDA, in collaboration with the Division of Rehabilitative Services (DORS), has been able to fund supported employment and other Meaningful Day services
- The student is eligible from his/her 21st birthday until his/her 22nd birthday
- If the date of graduation is after the individual's 21st birthday, the individual shall continue to be eligible for one year after the date of graduation

Transitioning Youth

- Transitioning planning should begin at age 14
- The DDA works with its partner agencies to:
 - ✓ Coordinate with local school systems and DORS in identifying students
 - ✓ Provide outreach and information to families and students about applying to the DDA for services
 - ✓ Complete eligibility screening for DDA services while the student is still in school
 - ✓ Facilitate transition to community and DDA services
 - ✓ Assist eligible individuals in accessing the most appropriate vocational supports and commit funding for those services

DDA Coordination of Community Services

- Information, assistance, monitoring and follow-up supports for:
 - People applying to DDA
 - ✓ People “DD” eligible on the DDA Waiting List
 - ✓ People offered the opportunity to apply to a DDA Waiver program
 - ✓ People receiving ongoing DDA funding for services and supports

DDA Coordination of Community Services

- People “DD” eligible on the Waiting List
 - ✓ Opportunity to choose a Coordinator of Community Services agency for supports
 - ✓ Supports include:
 - Identifying immediate goals and needs
 - Gaining access to local, State, and federal needed supports and services;
 - ❖ Respite, Vocational Rehabilitation, Housing, Medicaid, etc.
 - Maintaining and updating DDA with changes to contact information, person or caregiver circumstances for services, etc.;
 - Monitoring and follow up on referrals

DDA Coordination of Community Services

➤ People offered the opportunity to apply to a DDA Waiver program

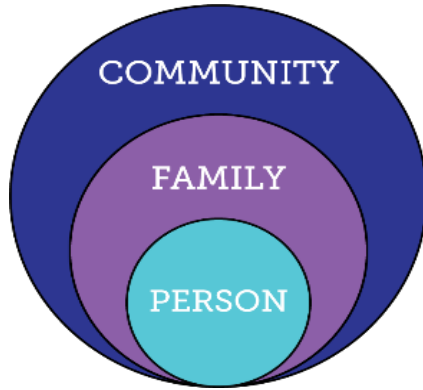
Supports include:

- ✓ Identifying immediate goals, needs, and natural and community resources
- ✓ Developing a Person-Centered Plan
- ✓ Completing the Waiver application and associated documents
- ✓ Monitoring and follow up on Waiver application status and referrals

DDA Coordination of Community Services

- People receiving ongoing DDA funding for services and supports
 - ✓ Identifying and updating goals and needs
 - ✓ Gaining access to available needed supports and services, including non-DDA services
 - ✓ Maintaining and updating eligibility for services from DDA and other programs
 - ✓ Monitoring to ensure that appropriate and approved services are received

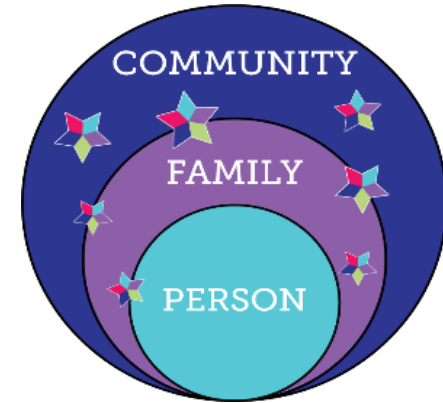
Integrated Services & Supports Across the Lifespan



Person - Family -
Community



Traditional Disability
Services



Integrated Services and Supports
within context of person,
family and community

MD *IS* an Employment First State

★ *What IS Employment First?*

★ A national movement and an alignment of systems that focus on the concept that: “*all people, even people with significant disabilities or more complex support needs, are capable of full inclusion in integrated employment and community life when given the proper support.*”



Why Employment First?

Historically, people with intellectual/developmental disabilities have:

- Been institutionalized or supported in segregated settings, like sheltered workshops, enclaves, large group outings
- Lacked equal access to jobs, social roles, typical community settings, services and relationships
- Lacked choice and meaningful involvement in their own lives and in their chosen communities
- Have lived “Program Life”
- *Had low expectations placed on them by society related to work, community, relationships and what is possible for their lives*

What IS Employment First?

- *We believe everyone that **WANTS** to work **CAN** work, if given the right supports in a setting that makes sense for them.*
- *And...because **Employment First** isn't Employment **ONLY**....*

When people aren't working, they can be supported to spend time in integrated community settings.

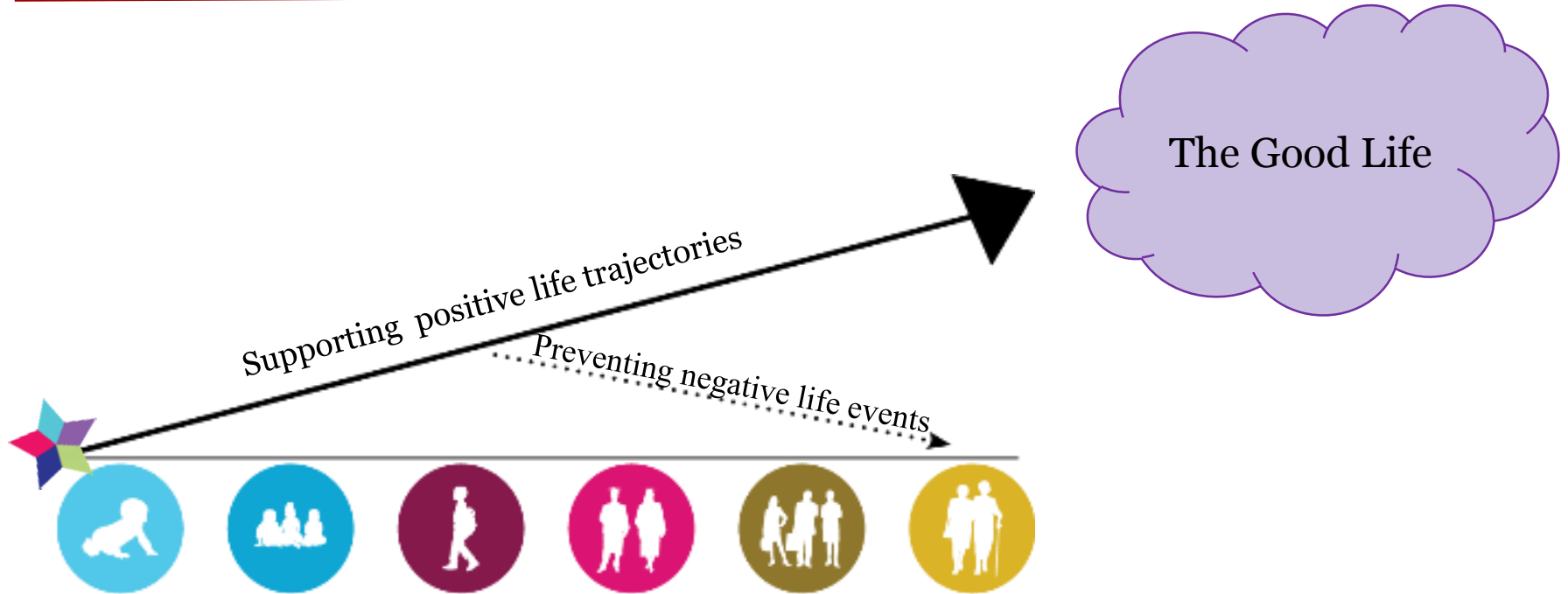


DDA's Goal

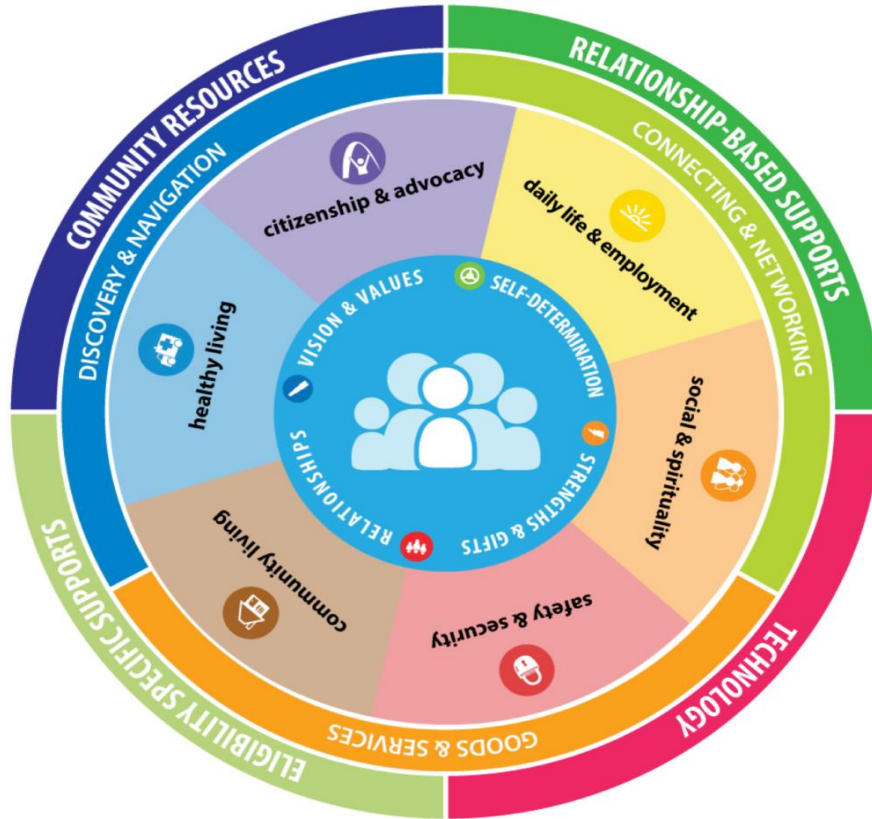
DDA's goal is to provide support for individuals and their families to determine what is important to and for them to achieve the "good life."



The Trajectory & Life Stages



Charting the LifeCourse Framework



- ★ Created by families to help individuals and families of all abilities develop a vision for a “good life”
- ★ Think about what they need to know and do
- ★ Identify how to find or develop supports /resources
- ★ Discover what it takes to live lives of their choosing

Integrated Star

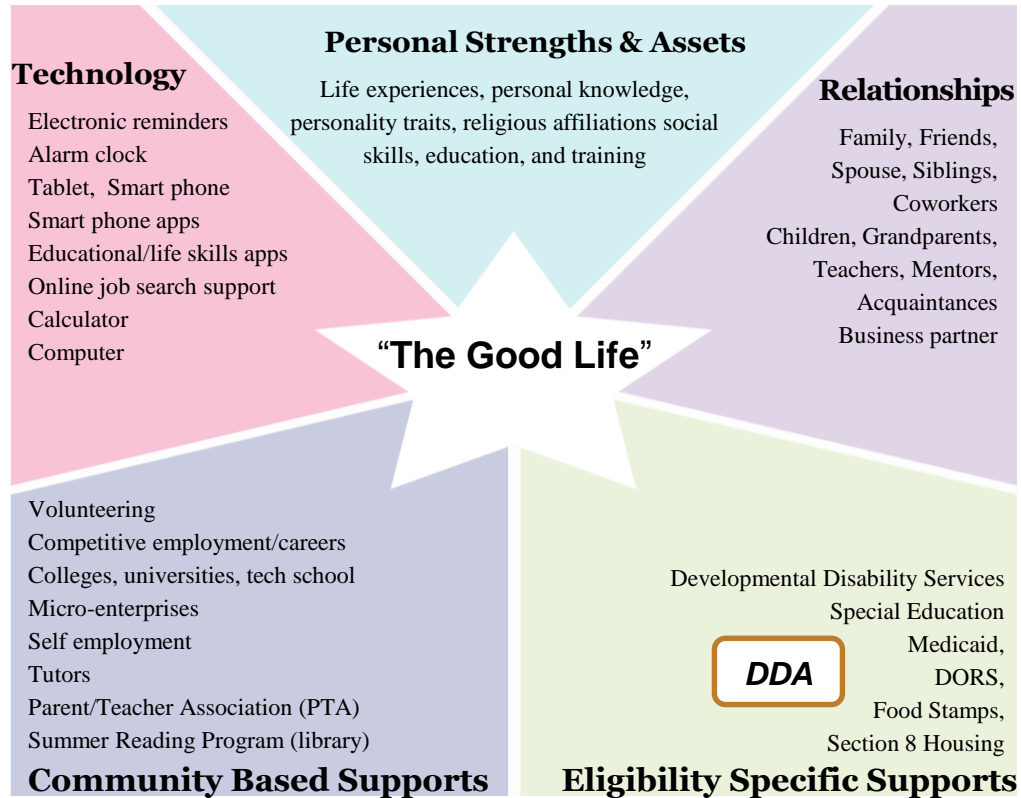


- ★ All people need support to lead good lives
- ★ Using a combination of many different kinds of support helps to plot a trajectory toward an inclusive, quality, community life
- ★ This tool will help individuals and families brainstorm the supports that they already have or might need in order to work in partnership to make their vision for a good life possible

Slide #28

LifeCourse Integrated Star product of F2F LifeCourse Network/ UMK, UCEDD

Integrated Star/Supports

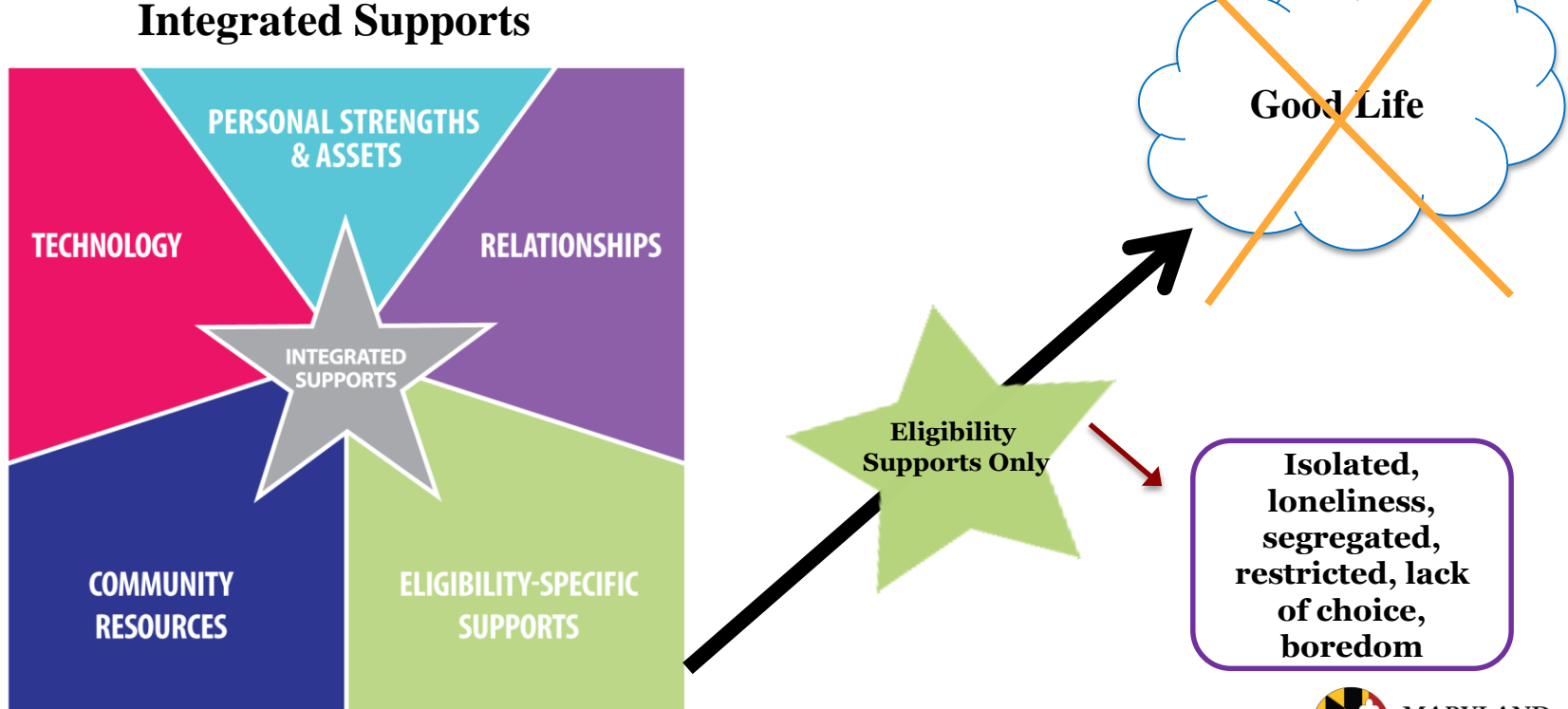


Slide #29

LifeCourse Integrated Star product of F2F LifeCourse Network/ UMK, UCEDD



Not such a “Good Life”



Questions



DDA Waivers



Family Supports Waiver

- ★ Children birth to 21 years
- ★ Various Support Services
- ★ Service Cap of \$12,000 annually



Community Supports Waiver

- ★ Children and adults
- ★ Meaningful Day and Support Services
- ★ Service Cap of \$25,000 annually

Community Pathways Waiver

- ★ Children and adults
- ★ Meaningful Day, Support, and Residential Services

Notes:

- All DDA Waivers will have option of self-direction or traditional services delivery models*

DDA Service Delivery Models

Self-Directed Model

- Promotes personal choice and control over the delivery of services and budget
- Participant or designated representative assumes employer and budget authority responsibilities as the “employer of record”

Employer Authority responsibilities include:

- ✓ decision-making authority to recruit, hire, train and supervise the individuals who furnish their services

Budget Authority responsibilities include:

- ✓ decision-making authority over how the Medicaid funds in a budget are spent

Traditional Model

- Services provided by various DDA Approved or Licensed community agencies
- Provider assumes all responsibilities as the “employer of record”

DDA Service Categories

- Meaningful Day Services
- Support Services
- Residential Services



DDA Waivers - Meaningful Day Services

Meaningful Day Services	FSW	CSW	CP
Supported Employment <i>(Transitioning to the new Employment Services in 2019)</i>		X	X
Employment Discovery and Customization Services <i>(Transitioning to the new Employment Services in 2019)</i>		X	X
Career Exploration		X	X
<i>Facility Based Supports</i>		X	X
<i>Small Group Supports</i>		X	X
<i>Large Group Supports</i>		X	X
Community Development Services		X	X
Day Habilitation		X	X
Medical Day Care		X	X

Slide #35



Note: FSW-Family Supports Waiver, CSW-Community Supports Waiver, CP-Community Pathways Waiver

DDA Waivers - Meaningful Day Services

Meaningful Day Services	FSW	CSW	CP
Employment Services		Phase in July 2019	Phase in July 2019
<i>Discovery</i>			
<i>Job Development</i>			
<i>Follow Along Supports</i>			
<i>On-going Job Supports</i>			
<i>Co-Worker Employment Supports</i>			
<i>Customized Self-Employment</i>			
Career Exploration			
Facility Based Supports		X	X
Small Group Supports		X	X
Large Group Supports	X	X	
Community Development Services	X	X	
Day Habilitation Services	X	X	
Medical Day Care	X	X	



DDA Waivers - Support Services

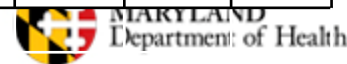
Support Services	FSW	CSW	CP
Assisted Technology and Services	X	X	X
Behavioral Support Services	X	X	X
<i>Behavioral Assessment</i>	X	X	X
<i>Behavioral Plan</i>	X	X	X
<i>Behavioral Consultation</i>	X	X	X
<i>Brief Support Implementation Services</i>	X	X	X
Environmental Assessment	X	X	X
Environmental Modifications	X	X	X
Family and Peer Mentoring Supports NEW	X	X	X*
Family Caregiver Training and Empowerment Services NEW	X	X	X*
Individual and Family Directed Goods and Services <i>(Self-Direction Only)</i>	X	X	X*
<i>Goods and Services (up to \$5000)</i>	X	X	X*
<i>Staff Recruitment and Advertisement (up to \$500)</i> NEW	X	X	X*
Housing Support Services NEW	X	X	X*

Support Services	FSW	CSW	CP
Live-In Caregiver Supports			X
Nursing Consultation NEW		X	X*
Nursing Case Management and Delegation Services NEW		X	X*
Nursing Health Case Management NEW		X	X*
Participant Education, Training and Advocacy Supports NEW	X	X	X*
Personal Supports	X	X	X
Remote Support Services NEW			X*
Respite Care Services	X	X	X
<i>Daily Rate</i>	X	X	X
<i>Hourly Rate (up to 8 hrs)</i>	X	X	X
<i>Camp</i>	X	X	X
Support Broker Services	X	X	**
Transition Services			X
Transportation	X	X	X
Vehicle Modifications	X	X	X


Slide #37

*Note: * New service proposal for 7/1/18 implementation*

*** Support Broker service will be provided as an Administrative service*



DDA Waivers - Residential Services

Residential Services	FSW	CSW	CP
Community Living--Enhanced Supports			Phase in July 2019
<i>Service</i>			
<i>Trial Experience</i>			
<i>Retainer Fee</i>			
Community Living --Group Home			X
<i>Service</i>			X
<i>Trial Experience</i>			X
<i>Retainer Fee</i>			X
Shared Living			X
<i>Matching Service</i>			X
<i>Host Home Stipend</i>			X
Supported Living 			Phase in July 2019

Resources and Information

➤ Employment

<https://dda.health.maryland.gov/Pages/employment.aspx>

➤ Family Supports Waiver

https://dda.health.maryland.gov/Pages/DDA_FAMILY_SUPPORTS_Waiver.aspx

➤ Community Support Waiver

https://dda.health.maryland.gov/Pages/Community_Supports_Waiver.aspx

➤ Community Pathways Waiver

https://dda.health.maryland.gov/Pages/Community_Pathways_Waiver_Renewal_2018.aspx

Contact Information

Lisa Ott, Regional Director

Central Maryland Regional Office

lisa.ott@maryland.gov

410-234-8200

Rhonda Workman, Director of Federal Programs

rhonda.workman@maryland.gov

410-767-8690

Questions

